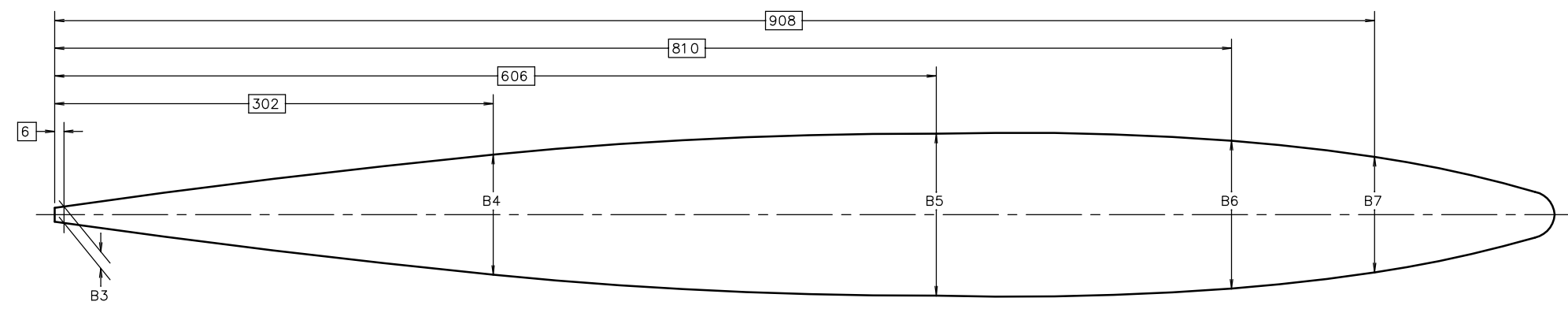
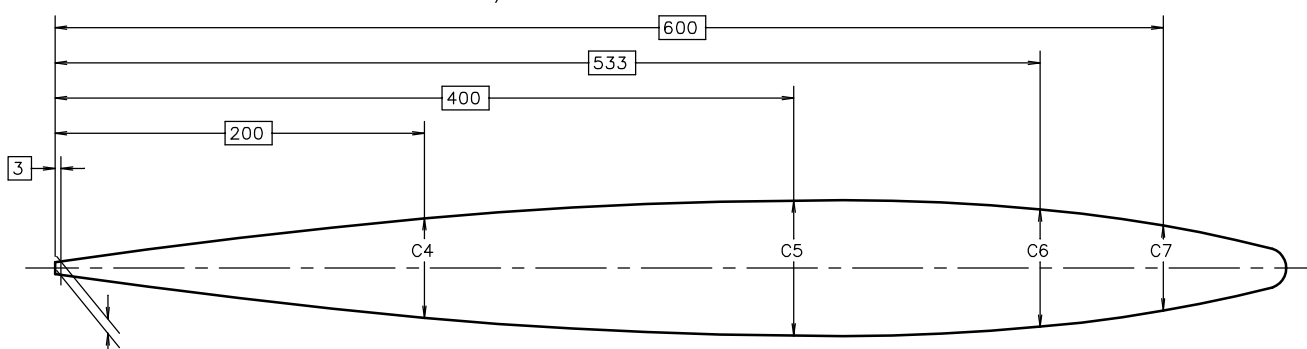


REVISIONS			
REV.	DESCRIPTION	DATE	APPROVED
A	585 WAS 583	4/5/00	S. S.

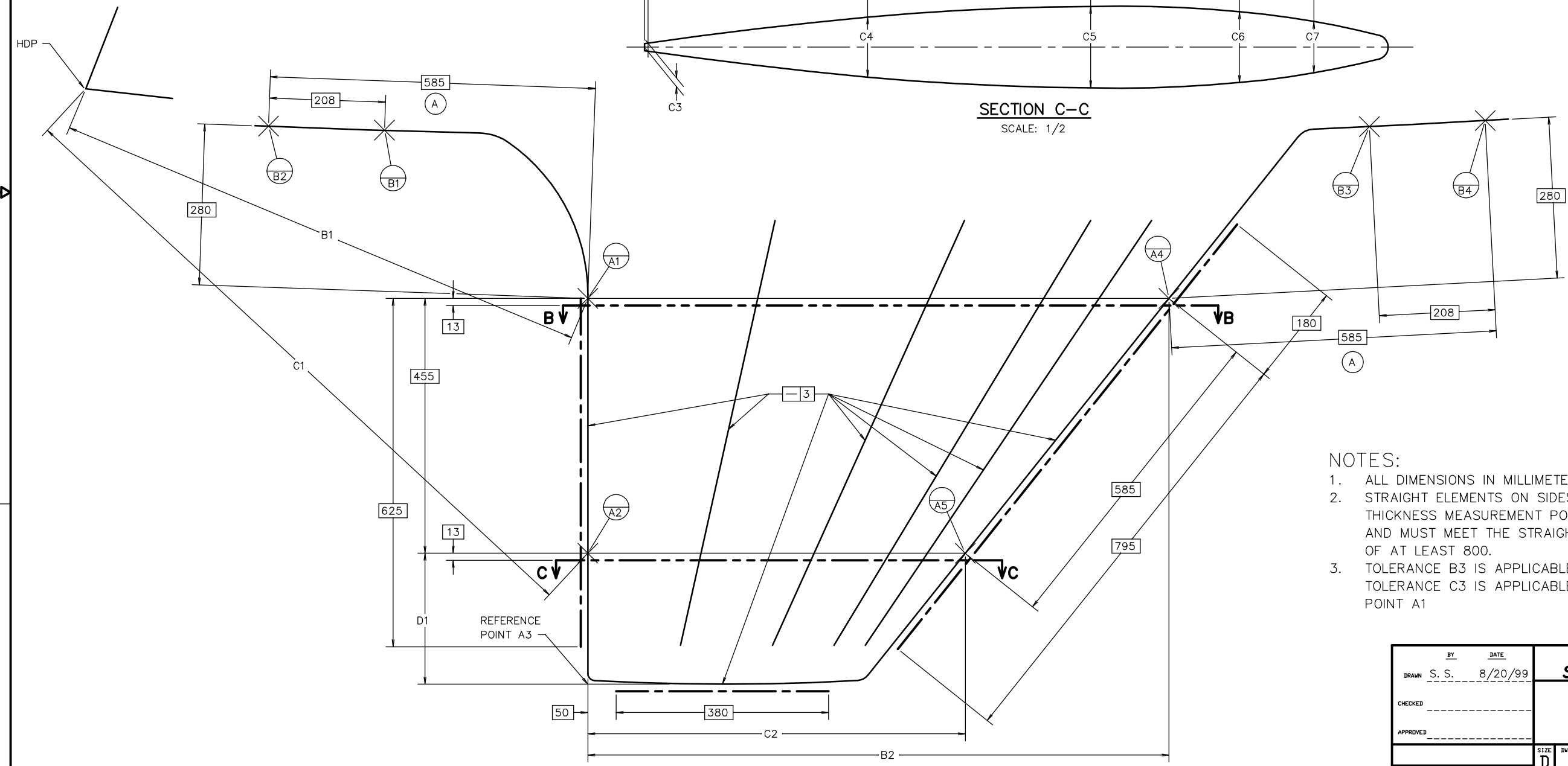


SECTION B-B
SCALE: 1/2



SECTION C-C
SCALE: 1/2

TOLERANCES		
	MIN	MAX
B1	2925	2950
B2	1025	1042
B3	6.5	—
B4	79	84
B5	109	114
B6	98	103
B7	78	84
C1	3040	3064
C2	662	678
C3	3	—
C4	51	56
C5	70	75
C6	62	67
C7	46	53
D1	230	245



- NOTES:**
1. ALL DIMENSIONS IN MILLIMETERS.
 2. STRAIGHT ELEMENTS ON SIDES OF KEEL PASS THROUGH KEEL THICKNESS MEASUREMENT POINTS B3, & C3, B4 & C4, ETC. AND MUST MEET THE STRAIGHTNESS TOLERANCE FOR A LENGTH OF AT LEAST 800.
 3. TOLERANCE B3 IS APPLICABLE AT POINT A1 AND ABOVE. TOLERANCE C3 IS APPLICABLE ALONG TRAILING EDGE BELOW POINT A1

BY: S. S.		DATE: 8/20/99		INTERNATIONAL SONAR CLASS ASSOCIATION	
DRAWN					
CHECKED				KEEL TOLERANCES	
APPROVED					
SIZE: D	DWG. NO.:	KEEL-1		REV.:	A
SCALE: 1/4	SHEET: 1		OF 1		